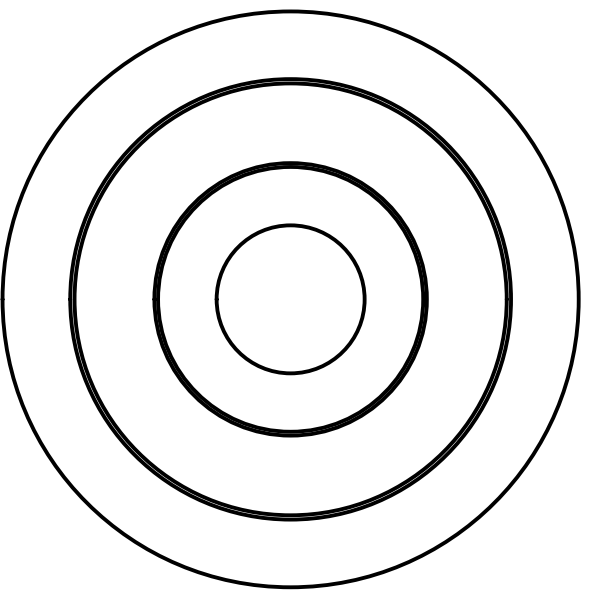
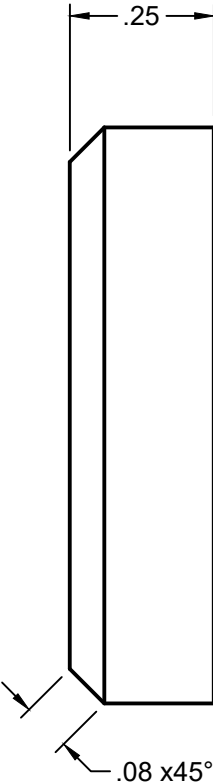
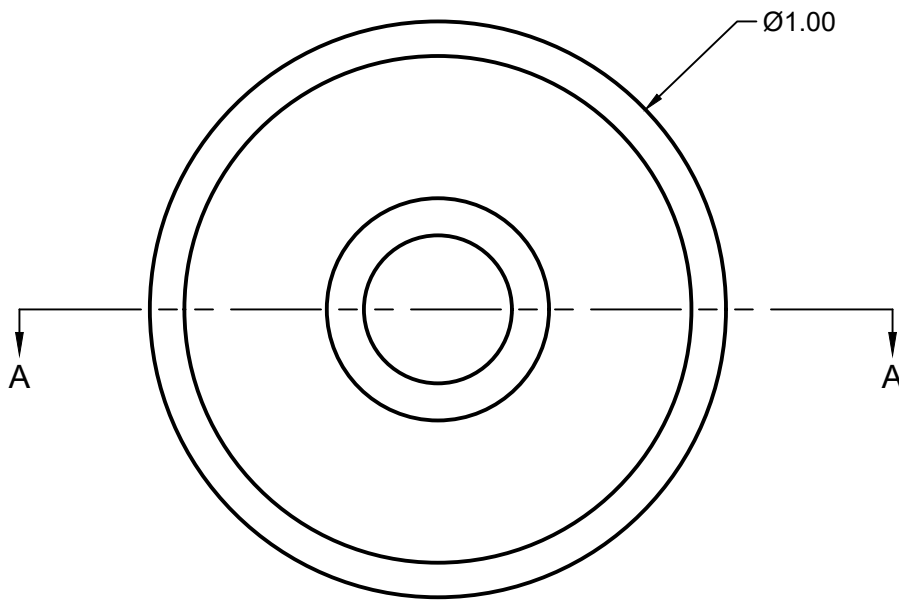
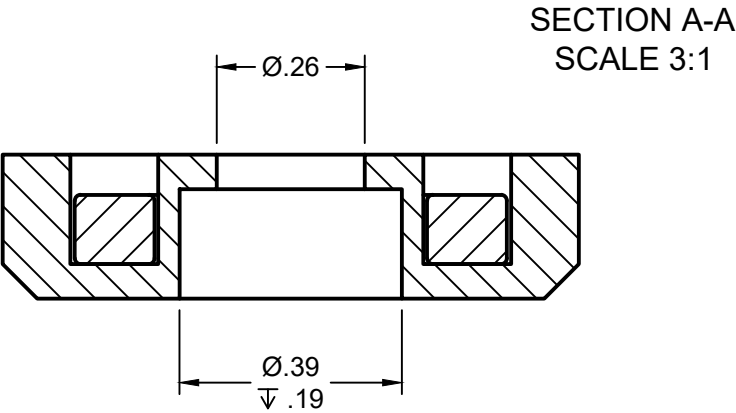


INTERFACE DETAILS AND NOTES:
1. USE A STAINLESS STEEL OR NONFERROUS SHCS WHEN MOUNTING

REVISION HISTORY		
REV	DESCRIPTION	DATE
0	INITIAL RELEASE	08/29/2012



ISOMETRIC VIEWS
SCALE:NONE

CONFIDENTIAL - ALL RIGHTS RESERVED DISCLOSURE OR DUPLICATION PROHIBITED UNLESS OTHERWISE SPECIFIED: DIMENSIONS ARE IN DECIMAL INCH ALL DIMENSIONS ARE REFERENCE	DRAWN: T.WOLFF	DATE: 10/01/2025	 WWW.JORALLLC.COM	
	CHECKED: J.WARZALA	APPROVED: 10/02/2025		
	PART #: MAGH-SEALD		DESCRIPTION: EPOXY SEALED MAG BOLT W/RING MAG	
	EPICOR #: 19200673	REV. 0		
		SCALE: 1.5:1		
		SHEET: 1/1		